

COMMUNITY FORESTRY MANAGEMENT PLAN

2009 – 2014

Township of Dennis Environmental Commission

Prepared by:

Arbor Care Resources
Mays Landing, NJ

M.F. Mickey Riggin – Arborist
NJ CTE # 366

Table of Contents

1. Table of Contents 2

Introduction..... 5

Mission Statement..... 5

PROGRAM GOALS AND OBJECTIVES 5

1. Maximize public safety relative to public trees..... 5

2. Training..... 5

3. Public Education and Awareness 5

4. Arbor Day Activities 6

5. Assessment/Inventory 6

6. Tree Hazard Identification Plan 6

7. Tree Planting 6

8. Tree Maintenance..... 7

9. Tree Recycling 7

10. Ordinance Establishment 7

11. Tree Care Disaster Plan..... 7

12. Insect and Disease Management 7

Tree Hazard & Liability Objective 7

3. **COMMUNITY OVERVIEW 8**

Amendments to this Community Forestry Management Plan 10

4. **COMMUNITY FORESTRY PROGRAM ADMINISTRATION..... 10**

Structure of the Environmental Commission and Municipal Administration..... 10

Current Environmental Commission Members..... 10

Responsibilities of the Environmental Commission 10

Responsibilities of the Mayor and Council 10

Responsibilities of the Public Works Department 11

Responsibilities of the Planning Department and Zoning Officer 11

Responsibilities of the Township Solicitor 11

Responsibilities of the Emergency Management Coordinator 11

Responsibilities of the Residents of the Township of Dennis..... 11

Current Ordinances 12

Organizational Chart..... 16

Responding to tree service requests 16

Contracting Tree Service Companies..... 16

5. **COMMUNITY MAP (Attached)..... 17**

6. **TRAINING PLAN AND PROFESSIONAL DEVELOPMENT 17**

Current Training Needs..... 17

Existing Programs, Policies & Procedures..... 17

2009 – 2014 Objectives..... 17

Training Sources 18

Outside Contractors & Public Utilities 18

7. **PUBLIC AWARENESS, EDUCATION AND OUTREACH..... 18**

Existing Programs, Policies & Procedures..... 18

2009 – 2014 Goals 19

2009 – 2014 Objectives..... 19

Presentations 19

Community Based Training Programs 20

Community Based Planting Programs (This section is also included in the Tree Planting portion of this plan) 20

Developing Information and Resources..... 20

8. **STATEMENT OF THE TREE BUDGET..... 21**

Funding Sources..... 21

Budget for the Year 2009..... 22

9. **PLAN IMPLEMENTATION 22**

1. Maximize public safety relative to public trees..... 22

2.	Training.....	22
3.	Public Education and Awareness	23
4.	Arbor Day Activities	23
5.	Assessment/Inventory	23
6.	Tree Hazard Identification Plan	23
7.	Tree Planting	23
8.	Tree Maintenance.....	24
9.	Tree Recycling	24
10.	Ordinance Establishment	24
11.	Tree Care Disaster Plan.....	24
12.	Insect and Disease Management	24
10.	TREE INVENTORY PLAN.....	25
	Goals	25
	Objectives	25
11.	TREE HAZARD IDENTIFICATION AND RISK MANAGEMENT	26
	Scope.....	26
	Existing Programs, Policies & Procedures.....	26
	Goals	26
	Method Used For Hazard Evaluation.....	26
	Tree Risk Management Program Planning and Design: A Ten Step Approach.....	27
	Objectives	27
	Tree Hazard Evaluation Method January 2010 – June 2011	27
	Removal of Hazardous Trees	27
	Objectives 2010 - 2014	27
	1. Tree Hazard Evaluation (April 2010).....	27
	2. Removal of Hazardous Trees and Pruning for Hazard Reduction (June 2010-December 2010)	28
	3. Development of a Risk Management Plan (January 2012 – 2014)	28
12.	TREE MAINTENANCE	28
	Goals	28
	Objectives 2010 – 2014.....	28
	1 Hazard Reduction (April 2010 – December 2010).....	28
	2 Hazard Reduction (January 2010– December 2014).....	29
	3 Young Tree and Small Tree Pruning (April 2011 – December 2011)	29
	4 Pruning and Removals (June 2011 – December 2014)	29
	5 Public Park Tree Care Program (June 2009 – December 2014).....	29
13.	TREE PLANTING IMPLEMENTATION PLAN	29
	Objectives 2009 – 2015.....	29
	2. Community Tree Planting Projects (January 2013 – 2014)	30
14.	TREE ORDINANCE ESTABLISHMENT	30
	Goals	30
	Existing Programs, Policies & Procedures.....	31
	Objectives January 2009 – December 2014	31
15.	TREE LEAF RECYCLING.....	31
	Existing Programs, Policies & Procedures.....	31
16.	INSECT AND DISEASE CONTROL.....	32
	Goal.....	32
	Existing Programs, Policies & Procedures.....	32
	Objectives January 2010 – December 2014	32
17.	EMERGENCY MANAGEMENT PLAN RELATED TO TREES.....	32
	Goals	32
	Objectives 2009-2014	33
	1 Develop an Emergency Cleanup Plan and a Critical Path/ Emergency Route Priority List (March 2010 – April 2010) 33	
	2 Prepare a Preliminary Plan (June 2010 – July 2014)	33
	3 Prepare an updated Emergency Management Plan (March 2010 - 2014 Annually)	33
19.	Community Stewardship Incentive Program Index	34

Guidelines for a Community Forestry Plan Municipal Information Form

Municipality: Township of Dennis
County: Cape May
Address: 571 Petersburg Road
PO Box 204
Dennisville , NJ 08214

Contact Name, Title: Judy Morgan, Chairperson

Phone #: (609) 861-9700

Fax #:

Organization Name: Dennis Township Environmental Commission

Mayor's Signature: _____

Date of Management Plan: July , 2009

Time period covered in Management Plan: September 1, 2009 to December 31, 2014

Please check off the Community Stewardship Incentive Program (CSIP) practices identified in your management plan.

- | | | | |
|-------------------------------------|---|-------------------------------------|--|
| <input checked="" type="checkbox"/> | CSIP # 1 Plan Preparation | <input checked="" type="checkbox"/> | CSIP # 2 Training |
| <input checked="" type="checkbox"/> | CSIP # 3 Public Education and Awareness | <input checked="" type="checkbox"/> | CSIP # 4 Arbor Day Activities |
| <input checked="" type="checkbox"/> | CSIP # 5 Assessment/Inventory | <input checked="" type="checkbox"/> | CSIP # 6 Tree Hazard Identification Plan |
| <input checked="" type="checkbox"/> | CSIP # 7 Tree Planting | <input checked="" type="checkbox"/> | CSIP # 8 Tree Maintenance |
| <input checked="" type="checkbox"/> | CSIP # 9 Tree Recycling | <input checked="" type="checkbox"/> | CSIP # 10 Ordinance Establishment |
| <input checked="" type="checkbox"/> | CSIP # 11 Tree Care Disaster Plan | <input checked="" type="checkbox"/> | CSIP # 12 Insect and Disease Mgt. |
| <input type="checkbox"/> | CSIP # 13 Other | | |

Official use only

Certification

The above named community has made formal application to the New Jersey Forest Service. I am pleased to advise you that after our review, the NJ Forest Service has concluded that this plan meets the standards set forth by the State and the NJ Community Forestry Council and is Approved for the period covered.

Signed _____

State Forester

Approved Date

Introduction

The Township of Dennis and the Environmental Commission have developed this Community Forestry Management Plan for the purpose of improving and maintaining the community forest at the highest level possible.

1. The implementation of the goals and objectives described within this plan are either the individual responsibility or the joint responsibility of the following municipal entities: the Dennis Township Environmental Commission, the Township Council, the Planning Board, the Zoning Board, and the Dennis Township Public Works Department.
2. This plan outlines the responsibilities of the municipal entities that will be responsible for overseeing or implementing the specific goals and objectives within this plan.
3. The implementation of the plan will provide a framework for the development and oversight of the community forest in Dennis Township and will increase the community's understanding of the urban forest. In addition, this plan will increase the public's appreciation of trees on public and private lands for the benefit of the entire community.

Mission Statement

The mission of the Township of Dennis in regard to the community forest is:

- For the Township of Dennis to provide a resource to the community for all tree related issues,
- To maintain and expand a tree canopy throughout the Township of Dennis which is safe, appreciated and protected, and adds to the quality of life in the community,
- To maintain, preserve and oversee the use of recreational areas that have been assigned as the responsibility of the Township of Dennis.

PROGRAM GOALS AND OBJECTIVES

The Township of Dennis has set the following objectives in an effort to fulfill its mission for the next 5 years:

1. Maximize public safety relative to public trees.

The Township of Dennis, both collectively and as individual committees, boards, commissions and departments, shall always strive to maximize safety relative to trees as the first priority in regard to all tree related decisions.

2. Training

The Environmental Commission will provide training resources for the members in Core Training and arboricultural related issues that are related to the community need.

The Public Works Department will provide training resources for the employees in Core Training, Risk Assessment, Tree Maintenance, Tree Planting, and Insect and Disease Control.

3. Public Education and Awareness

The Environmental Commission will be develop, implement and support Public Education and Awareness programs that address the community need or interest. Some of the projected projects will:

- Stimulate public interest and community participation in identifying and preserving landmark and specimen trees. Develop a portable display featuring landmark trees of Dennis Township Tree Registry and forms to submit potential trees for inclusion. Locate, assess, measure and photograph trees.
- Consider the benefits of establishing a Shade Tree Committee to take the lead in Forestry Management Plan activities
- Develop and maintain the new web site
- Develop handouts and articles about the Environmental Commission, community benefits of trees, tree care, planting, infestation control, landmark tree registry and preservation.
- Stimulate public interest, appreciation and support for public trees and the proper maintenance of private trees.
- Provide educational seminars on tree selection, planting, pruning, and maintaining trees

4. Arbor Day Activities

The Environmental Commission will develop, implement and support Arbor Day activities as outlined in the Arbor Day and Tree City USA guidelines. These programs will include:

- School Presentations – An Arbor Day presentation at the elementary school on the benefits of trees in our community, tree planting demonstration, tree proclamation, and the distribution of seedlings
- Support Arbor Day in accordance with the Tree City USA standards

5. Assessment/Inventory

The Environmental Commission will develop a tree inventory of ‘Noteworthy Trees’ to be added to the ‘Tree Register’.

The Public Works Department will implement a tree inventory system that identifies the following tree information:

- The tree inventory of Young Trees.
- The tree inventory of trees that require Tree Maintenance.
- The tree inventory High Risk Trees.
- The tree inventory of Open Planting Sites

6. Tree Hazard Identification Plan

The Public Works Department will develop a Tree Hazard Identification and Risk Management Plan that will include:

- A Risk Assessment for significant trees in the township.
- A Risk Assessment for trees on public property or trees that may impact public property.
- A schedule of tree examination by zones and prioritized action based on safety.

7. Tree Planting

The Public Works Department may be responsible for the planting or planting oversight of new trees on municipal property. The Environmental Commission will assist the Planning Department by providing project development, training resources, and stimulating community support.

- The Environmental Commission will develop a set of guidelines for planting trees and a list of optimum recommended tree species that is reflective of the current tree inventory and the community needs
- The Environmental Commission will develop a set of optimum tree species for the community that is based on the existing soils, actual wind and water conditions, salt tolerance, planting size, physical constraints, aesthetic qualities, hardiness, insect & disease resistance, and the tree’s beneficial qualities in relation to the migratory bird population
- The Environmental Commission will develop a proactive tree-planting program. Tree planting will be increased in year 4-5 of this plan.

8. Tree Maintenance

The Public Works Department will be responsible for the maintenance and protection of all trees on public property throughout the Township.

- The Public Works Department will be responsible for the maintenance of the existing mature trees on public property throughout the Township through proper maintenance.
- The Public Works Department will be responsible for the maintenance and protection of the young trees on public property throughout the Township through proper young tree pruning.
- The Environmental Commission will assist the Public Works Department in the development and implementation of a long-term and short-term maintenance plan for areas that have been designated the responsibility of the Township.
- The Environmental Commission will compose a letter for distribution to utility services, state agencies, and municipal departments. The letter will request that the Environmental Commission should be notified in of any activity affecting trees and the commission's willingness to participate in project planning.

9. Tree Recycling

The Public Works Department will be responsible for the recycling program for recycling leaves

- The Township of Dennis has a leaf recycling program for recycling leaves. Residents can receive one pick-up in the spring and one pick-up in the fall.
- The Township also has a tree recycling program for recycling trees that are left by the curb. Residents can receive one pick-up in the spring and one pick-up in the fall.
- All material is recycled back into the environment.
- No expansions or changes are planned at this time.

10. Ordinance Establishment

The Dennis Township Council will determine the need for any supplemental ordinances needed for the oversight of planting, maintenance, and removal of trees. The Dennis Township Council may request assistance from the Environmental Commission or other respective municipal entities. The Environmental Commission or other respective municipal entities may also make recommendations based on community comment or a determined need. Some of the possible recommendations may be:

- an ordinance for tree protection on new construction sites
- an ordinance to encourage builders to mitigate tree removal
- an ordinance for protection of specimen trees in the Dennis Township Landmark Tree Registry
- an ordinance for tree removal mitigation fund for major subdivisions
- an ordinance for tree planting specifications in Town Center design code

11. Tree Care Disaster Plan

The Environmental Commission will consult with Public Works and Emergency Management to assist the Emergency Management administrator in the development an Emergency Management Plan.

12. Insect and Disease Management

The Environmental Commission will assist the Public Works Department in the development of a development of a set of guidelines for addressing insect and tree disease problems such as Gypsy Moth, Southern Pine Beetle, and Bacterial leaf Scorch

Tree Hazard & Liability Objective

The Tree Hazard and Liability Objective has not changed since the original management plan was approved. The Township of Dennis views street trees as an asset to the Community. The planting, nurturing and care of street trees is encouraged by the Township and the Township Environmental Commission; however, as street trees mature they require care, maintenance and ultimately, may require replacement.

The Environmental Commission has adopted guidelines in order to insure that “the right tree is planted in the right place;” nevertheless, care and maintenance are required in order to insure that community trees not only contribute to the environmental and economic vitality of the Township, but also reduce the hazards to public safety.

In this regard, the Dennis community must work within a reasonable budget. Accordingly, the Township may not be able to reach each and every need with regard to the community forest immediately.

It is the intent of this plan to focus on available resources to the greatest extent possible and to work in a logical progression towards a healthy forest with commensurate reduced risks to public safety. It is the opinion of the Environmental Commission that, by taking the logical steps outlined in the plan, the Township will gain public support for plan implementation. Additionally, steps outlined in the plan will aid in demonstrating the long-term benefits to the environment and public safety.

The Township wishes to become more pro-active in the management and care of Community trees. Through inventory and hazard assessment, the Township will position its Environmental Commission to take corrective action prior to structural tree failure and other hazardous tree conditions.

While it is acknowledged that not all hazardous conditions can be predicted, good maintenance and care will reduce the probability despite the fact that unexpected events may still occur.

Adherence to the attached plan will demonstrate that the Township of Dennis is devoting reasonable levels of resources in a planned manner to reduce the number of tree related accidents and thereby reduce its exposure to liabilities and increase public safety.

3. COMMUNITY OVERVIEW

The History of the Township of Dennis’s Environmental Management in relation to its trees.

Understanding Dennis Township’s community forest history might begin with our relationship with the extensive Atlantic White Cedar forests in the Atlantic coastal plain. Resident loggers, saw millers and carpenters recall tapping extensive cedar forests in the lowlands associated with the creeks and bogs of the Great Cedar Swamp and others. The township once supplied raw cedar logs, shakes, cedar crafted duck boats, furniture, decoys etc to a variety of local and regional markets. Along with cedar, white oak and Jersey pine was also cut in the uplands for construction, carpentry and fuel. The cycle of the local agro-forestry industry paralleled the natural Pinelands cycle of fire and renewed growth. Cedar stands were clear cut and left to sprout again on a cycle of decades. This intensive resource use gave rise to an ecological landscape characterized by long term stability where rapid regeneration preserved a broad range of indigenous species over time. In tandem with declining markets for Atlantic White Cedar, a sharp decline in logging occurred in the 2nd half of the last century. By the 1980’s only a handful of loggers, millers, builders remained and fewer are active today. One mill in the Belleplaine community cuts cedar for pallets. NJ no longer permits clear-cutting of cedar. Although the disappearance of trees has become accepted as an indicator of environmental degradation, a lack of long term systematic management of the agro-forestry industry damaged the cedar industry and affected the resource itself. Now former pristine stands have been and invaded by red maple and other species. As cedars declined, Dennis Twp became increasingly suburbanized by clearing and fragmentation of the upland forest for residential, commercial and municipal construction. An estimated 400 acres were deforested in 1999. As the township seeks ratables and must address a deficit in meeting COAH requirements, pressure to develop is intense along upland deciduous forested areas of the eastern part of the township rt 9 corridor, where some of the forest is second growth over former farmlands. Currently, about half of the Twp is forested with 2nd or 3rd growth stands of cedar, pine and deciduous trees. More than a third is in federal or state ownership and the US fish and Wildlife Service is aggressively purchasing lands to guarantee a continuous forest cover for habitat preservation. Some old growth cedar stands remain in the Great Cedar Swamp and other wetlands in the Belleplaine State Forest and state wildlife management areas. Old growth hardwood and pine stands are becoming rarer due to residential and commercial development. Because of the town’s rural character, current streets generally follow old country roads and lack sidewalks and landscape/ street trees. Those that exist are on private property. The current masterplan identifies 5 Town centers and encourages attractive ‘downtown’ areas including tree-scaping. These villages have some notable private specimen trees but none that are maintained by the municipality. On Rts 9 and 47 there have been some private plantings along the public rights of way, offering long perspectives of cedars. There is an inventory of

8 specimen trees of great age and girth . These have been registered on the Dennis Township Historic and Landmark Tree Register. But , there is no provision for protection. efforts to introduce protective ordinances break down with any suggestion of infringing on an owner's right to do what they wish with the trees. A community wide survey preferred a tree committee to educate the community about trees and arbor care rather than a Shade Tree Commission with regulatory powers to mandate or preserve.

Some yrs ago in 1990 the Watsons DTEC members canvassed the Township for landmark trees. They identified, measured and aged a number of old growth trees. They listed them in the DT Landmark Tree Registry which in turn became a part of the Master Plan of 1998. It is referred to in township ordinances but w/o protective language. No one has followed up on those trees since the original Watson survey. Historically, and currently the responsibility for trees on public property and rights of way falls to public works and is done on an as needed basis when a problem occurs and is strongly reported or publicly demanded or requested by Twp Committee. Trees on private property remain the sole responsibility of owners. The DTEC does write recommendations for replacement planting when site plans reveal plans to deforest a lot. The Planning board supports these recommendations but there are no ordinances to back them up.

The Township of Dennis's Environmental Management Program Today in relation to its trees

The DTEC reviews site plans with an eye to preservation of green cover. It requests of planning officials to ask builders to enhance site plans with plantings and to mitigate tree removal with indigenous tree planting. The Commission has a member sitting on the Master Plan Petition Committee who is advocating for denser development in town centers for the preservation of the bordering forest as well as advocating for treescaping in the centers.

The community's achievements in developing and maintaining trees in the community. _

Planning Board support for sustaining extant tree cover and cajoling builders to replace removed trees with landscape trees has stemmed deforestation. Seedling distributions to private citizens as part of Earth Day Celebrations in Cape May County has increased trees .

Problems that were encountered and new issues the developed and how they were handled.

Excessive turnover of DTEC members and loss of records and documentation with the resignation and moving away of the previous chairperson left the commission without leadership and direction. This resulted in appointment of a novice group, some of whom were not sure the purpose of the commission or what membership entailed and soon they resigned as well. An effort by remaining members to seek out truly concerned citizens and a willingness on the part of the Mayor to accept recommendations has brought us to a core of committed workers determined to have a positive effect on preserving our natural resources. The DTEC needed to change its meeting schedule to make more timely recommendations to the planning board and asked the Mayor for a crossover zoning board member to communicate concerns to that body as well. Fiscal limitations and liability concerns have affected commitment to preserving some old growth trees on municipal property. A sound forestry management plan will reduce liability.

The future of the Township of Dennis's Environmental Management Program

The plans success requires education at all levels leading to greater appreciation of our arboriculture and knowledge based activities offering increased participation by the DTEC and its community in preserving, maintaining and planting trees. Consensus on protective ordinances and commitment to our plan will be essential.

Relation to the Township of Dennis Municipal Master Plan, Open Space Plan, and Watershed Plan

The new Master Plan is currently being revised. The current Master Plan was approved in 1994.

The DT Landmark Tree Registry became a part of the Master Plan of 1998 and was updated in the 1994 Master Plan. The Dennis Township Tree Register from the 1994 Master Plan (plate #19) has been included for the Community Map

The 1994 Master Plan includes the existing Pinelands Plan Element, Land use element, and a Conservation plan element that all refer to protecting and maintaining the trees in Dennis Township.

The goals and objectives of the Community Forestry Management Plan are consistent in both the intent of the goals and in the specific outcome of the objectives in the Master Plan and are designed to maximize the aesthetic and physical benefits of the environment to the community.

Amendments to this Community Forestry Management Plan

This Plan is based on objectives and conditions that were valid at the time it was developed. However, the Township recognizes that conditions and needs may change over time and that this Plan may become outdated. Therefore, this Plan may be amended according to the normal city council procedure for policy amendment.

4. COMMUNITY FORESTRY PROGRAM ADMINISTRATION

Structure of the Environmental Commission and Municipal Administration

The management of the community forest and the administration of the Community Forestry Program is a cooperative effort between the mayor, Township Commission, public works, planning, parks department, zoning, emergency management, the Township solicitor, the Environmental Commission, and the residents of the Township of Dennis. The Environmental Commission acts on the behalf of the Township of Dennis regarding all issues related to trees within the Township. The interaction between the Environmental Commission, the community, and other municipal departments on tree related issues requires a constant exchange of communication and correspondence.

The DTEC has arranged its meeting schedule to make more timely recommendations to the planning board. A crossover zoning board member is also a member of the Environmental Commission to further facilitate communication between the two committees. Similar arrangements will be made with other groups as they are formed

The Commission Secretary is the primary contact person and the Commission Chairperson is responsible for the administration of the Commission.

All of the board members are residents of the Township and are appointed by the mayor to serve in a volunteer capacity.

Current Environmental Commission Members

The current members of the Dennis Environmental Commission are: Judith Gollatz-Morgan, Chairperson, Sue Slotterback, Secretary, Kim Berson, Eileen Turner, Edward J. Chelius, Charles Gordon Engel, Doug Mauro, Alt #1 – VACANT, John Murphy, Alt #2.

Responsibilities of the Environmental Commission

The Township of Dennis, both collectively and as individual committees, boards, commissions and departments, shall always strive to maximize safety relative to trees as the first priority in regard to all tree related decisions.

- The Environmental Commission is responsible for the oversight and protection of the community forest within the township.
- The Environmental Commission will provide training resources for the members in Core Training and arboricultural related issues that are related to the community need.
- The Environmental Commission will be develop, implement and support Public Education and Awareness programs.
- The Environmental Commission will be develop, implement and support Arbor Day activities as outlined in the Arbor Day and Tree city USA guidelines.
- The Environmental Commission will develop a tree inventory of ‘Noteworthy Trees’ and the ‘Tree Register’.
- The Environmental Commission will assist the Planning Department in tree planting by providing project development, training resources, and stimulating community support.
- The Environmental Commission may make recommendations for tree ordinances that are based on community comment or a determined need.

Responsibilities of the Mayor and Council

The Township of Dennis, both collectively and as individual committees, boards, commissions and departments, shall always strive to maximize safety relative to trees as the first priority in regard to all tree related decisions.

- The Dennis Township Council will determine the need for any supplemental ordinances needed for the oversight of planting, maintenance, and removal of trees.

- The Dennis Township Council is responsible for appointing members to the Environmental Commission.
- The Dennis Township Council is responsible for providing financial support and approving the budget for the Environmental Commission and Public Works.
- The Dennis Township Council is responsible for making sure resident and homeowner concerns are addressed.

Responsibilities of the Public Works Department

The Township of Dennis, both collectively and as individual committees, boards, commissions and departments, shall always strive to maximize safety relative to trees as the first priority in regard to all tree related decisions.

- The Public Works Department will provide training resources for the employees in Core Training, Risk Assessment, Tree Maintenance, Tree Planting, and Insect and Disease Control.
- The Public Works Department will implement a tree inventory system that identifies necessary tree information.
- The Public Works Department will develop a Tree Hazard Identification and Risk Management Plan.
- The Public Works Department may be responsible for the planting or planting oversight of new trees on municipal property.
- The Public Works Department is responsible for the maintenance of all trees on public property throughout the Township.
- The Public Works Department is responsible for the Emergency Clean-up of all trees on public property throughout the Township.

Responsibilities of the Planning Department and Zoning Officer

The Township of Dennis, both collectively and as individual committees, boards, commissions and departments, shall always strive to maximize safety relative to trees as the first priority in regard to all tree related decisions.

- The Planning Department provides permits for construction
- The Planning Department provides copies of Township ordinances and Environmental Commission planting specifications to applicants
- The Planning Department monitors all projects to maintain compliance to current ordinances regarding trees.

Responsibilities of the Township Solicitor

The Township of Dennis, both collectively and as individual committees, boards, commissions and departments, shall always strive to maximize safety relative to trees as the first priority in regard to all tree related decisions.

- The Township Solicitor oversees all legal aspects of the community

Responsibilities of the Emergency Management Coordinator

The Township of Dennis, both collectively and as individual committees, boards, commissions and departments, shall always strive to maximize safety relative to trees as the first priority in regard to all tree related decisions.

- The Emergency Management Coordinator is responsible for the implementation of the Tree Care Disaster Plan during any emergency periods and for the coordination of all emergency services related to trees during an emergency period.
- The Emergency Management Coordinator advise residents of dangerous situations
- The Emergency Management Coordinator oversees evacuation routes, and provide assistance during emergencies

Responsibilities of the Residents of the Township of Dennis

The residents of the community are the primary benefactors of all that is done to maintain a healthy community forest.

The Township of Dennis, both collectively and as individual committees, boards, commissions and departments, shall always strive to maximize safety relative to trees as the first priority in regard to all tree related decisions.

- The residents are required to abide by all ordinances and laws regarding trees in Dennis.
- The residents should notify the Environmental Commission of any trees that are becoming hazardous, declining or have been injured.
- Residents or property owners may be required to water new plantings on their property.

Current Ordinances

Chapter 95 EXCAVATIONS

§ 95-8. General regulations for resource extraction.

A. General regulations.

- (4) At least the first one hundred fifty (150) feet adjacent to any street line shall not be used for mining or grading operations and shall be landscaped with evergreen shrubbery, planted at an initial height of not less than five (5) feet, at the density of one (1) **tree** for every ten (10) square feet. Operations with existing wooded areas in the buffer shall be reviewed by the Planning Board for determination if additional plant materials are required to comply with this item.
- (11) Restoration. Restoration of disturbed areas shall occur at the completion of the resource extraction operation or as dictated by the Planning Board as part of their approval process. Restoration shall be in accordance with the following requirements:
- (h) Restoration shall, to the maximum extent practical, result in the reestablishment of the vegetation association which shall include a combination of the following as set by the Planning Board:
- [1] Planting of a minimum of one thousand (1,000) one (1) year old pitch pine seedlings per acre.
- [3] Cluster planting of characteristic Pinelands Oak Species, such as blackjack oak, bur oak, chestnut oak, and black oak and shrubs, such as black huckleberry, sheep laurel, and mountain laurel. All plantings shall be at a sufficient spacing to ensure establishment of the species.

Chapter 112 GARBAGE, RUBBISH AND REFUSE

§ 112-10. Collection of recyclable materials.

The collection of source separated recyclable materials shall be in the manner prescribed as follows:

- C. The following materials must be source separated and recycled through the municipal recycling program in the following manner:
- (3) Brush and **tree** branches — The Department of Public Works will conduct one (1) monthly curbside pickup during the months of March, April, May, September and October.
- D. The following materials must be source separated and recycled by the generator at authorized CMCMUA recycling facilities or any NJDEP approved recycling center:
- (1) Grass and **tree** stumps — The generator must deliver to the Cape May County Municipal Landfill.

Chapter 139 PARKS AND RECREATION

§ 139-1. Prohibited acts.

- A. It shall be unlawful for any person in a public park or recreation area to:

- (3) Damage, cut, carve, transplant or remove any **tree** or plant or injure the bark or pick flowers or seed of any **tree** or plant, dig in or otherwise disturb grassed areas or in any other way injure the natural beauty or usefulness of any area.
- (10) Climb any **tree**, or walk, stand or sit upon monuments, vases, planters, fountains, railings, fences or upon any other property not designated or customarily used for such purposes. [Added 4-14-1997 by Ord. No. 97-06]

Chapter 163 STORMWATER CONTROL

§ 163-24 Stormwater management performance standards for major development.

- (3) In addition to all other requirements of this section, each applicant shall demonstrate that, at a minimum, existing trees and vegetation on the development site will be preserved, protected and maintained according to the minimum standards established by provisions of the Dennis Township Land Use Ordinance, Zoning Ordinance or by conditions of zoning or variance approval. Existing trees and vegetation shall be protected during construction activities in accordance with the "Standard for **Tree** Protection During Construction" provided in the NJ State Soil Conservation Committee Standards for Soil Erosion and Sediment Control in New Jersey, which is incorporated herein by reference as amended and supplemented.

Chapter 165 SUBDIVISION OF LAND

§ 165-7. Definitions. [Amended 1-31-1977 by Ord. No. 77-34, 5-23-1977 by Ord. No. 77-42; 8-9-1982 by Ord. No. 82-96]

MATURE TREE — Any woody perennial having a diameter greater than twenty-four (24) inches at any point or a height in excess of thirty (30) feet. [Added 12-10-1990 by Ord. No. 90-205]

TREE — Any woody perennial having a diameter greater than two and one-half (2¹/₂) inches, measured at a point four and one-half (4¹/₂) feet above the ground. [Added 12-10-1990 by Ord. No. 90-205]

TREE REGISTER — A list of trees within the township which are of special significance and are therefore worthy of protection by virtue of their size, age, type, history or relationship to historical or cultural events. A list of such trees as determined by the Township Environmental Commission shall be kept on file with the Township Clerk. [Added 12-10-1990 by Ord. No. 90-205]

§ 165-15. Details.

- A. The preliminary plat shall be clearly and legibly drawn or reproduced at a scale of not less than one (1) inch equals one hundred (100) feet. Preliminary plats shall be designed by a professional engineer or land surveyor licensed to practice in the State of New Jersey. The plat shall be designed in compliance with the provisions of Article VI of this chapter and shall show or be accompanied by the following information on existing and proposed features:

- (29) Any endangered species of trees or trees listed on the Township **Tree** Register shall be indicated on the plans. [Added 12-10-1990 by Ord. No. 90-205]

§ 165-21. Application requirements for minor development.

- A. Any application for approval of minor development shall include at least the following information:

- (10) A map showing existing vegetation, identifying predominant vegetation types in the area and showing proposed landscaping of the subject property, including the location of the **tree** line before and after development and all areas to be disturbed as a result of the proposed development.

§ 165-37. Natural features and public lands. [Amended 12-10-1990 by Ord. No. 90-205]

- B. A conscious effort shall be made to preserve all worthwhile trees and shrubs which exist on site. On individual lots or parcels, care shall be taken to preserve selected trees to enhance the landscape treatment of the development.

- (1) All development within the township shall be designed to avoid irreversible adverse impacts on the survival of populations of threatened or endangered plants as listed on the **Tree** Register.

Chapter 185 ZONING

§ 185-7. Definitions.

MATURE TREE — Any woody perennial having a diameter greater than twenty-four (24) inches at any point or a height in excess of thirty (30) feet.

(P) **RECORD TREE** — The largest **tree** of a particular species in New Jersey based on its circumference at four and one-half (4.5) feet above ground level. A listing of the largest known **tree** of each species and its location is maintained at the principal offices of the Commission. [Added 2-24-97 by Ord. No. 97-01]

TREE — Any woody perennial having a diameter greater than two and one-half (2 1/2) inches, measured at a point four and one-half (4 1/2) feet above the ground.

TREE REGISTER — A list of trees within the township which are of special significance and are therefore worthy of protection by virtue of their size, age, type, history or relationship to historical or cultural events. A list of such trees shall be kept on file for use and guidance of persons presenting plans for development in wooded areas.

- (5) Landscaping and buffering.

(b) The following minimum standards shall apply:

- [2] Parking areas. At least five percent (5%) of the parking area shall be landscaped, and a minimum of one (1) **tree** for each ten (10) parking spaces shall be installed. The landscaping shall be located in protected areas, along walkways, in center islands and in all irregular spaces not used for parking. In narrow islands, low spreading plants such as creeping juniper, English ivy, myrtle and pachysandra, are appropriate.
- [3] Trees. A minimum of two (2) trees per each commercial unit shall be provided.

ARTICLE VI Pinelands Area Development Procedures and Standards

§ 185-41. Special procedures for development.

A. Applicability of procedures.

- (2) Except as provided in Subsection A(3) below, the following shall not be subject to the procedures set forth in this section:
 - (o) **Tree** pruning;
 - (p) The following forestry activities:
 - [1] Normal and customary forestry practices on residentially improved parcels of land that are five (5) acres or less in size;
 - [2] **Tree** harvesting, provided that no more than one (1) cord of wood per five (5) acres of land is harvested in any one (1) year and that no more than five (5) cords of wood are harvested from the entire parcel in any one (1) year;
 - [3] **Tree** planting, provided that the area to be planted does not exceed five (5) acres in any one (1) year, no soil disturbance occurs other than that caused by the planting activity and no trees other than those authorized by N.J.A.C. 7:50-6.25 are to be planted;

§ 185-46. Clearing of vegetation; landscaping. [Amended 2-24-97 by Ord. No. 97-01]

D. In order to conserve water, conserve natural features and reduce pollution from the use of fertilizers, pesticides and other soil supplements, all landscaping or revegetation plans prepared pursuant to Subsection C. above or required pursuant to Section 165-54B(2)(c) of the Site Plan Review Chapter shall incorporate the following elements:

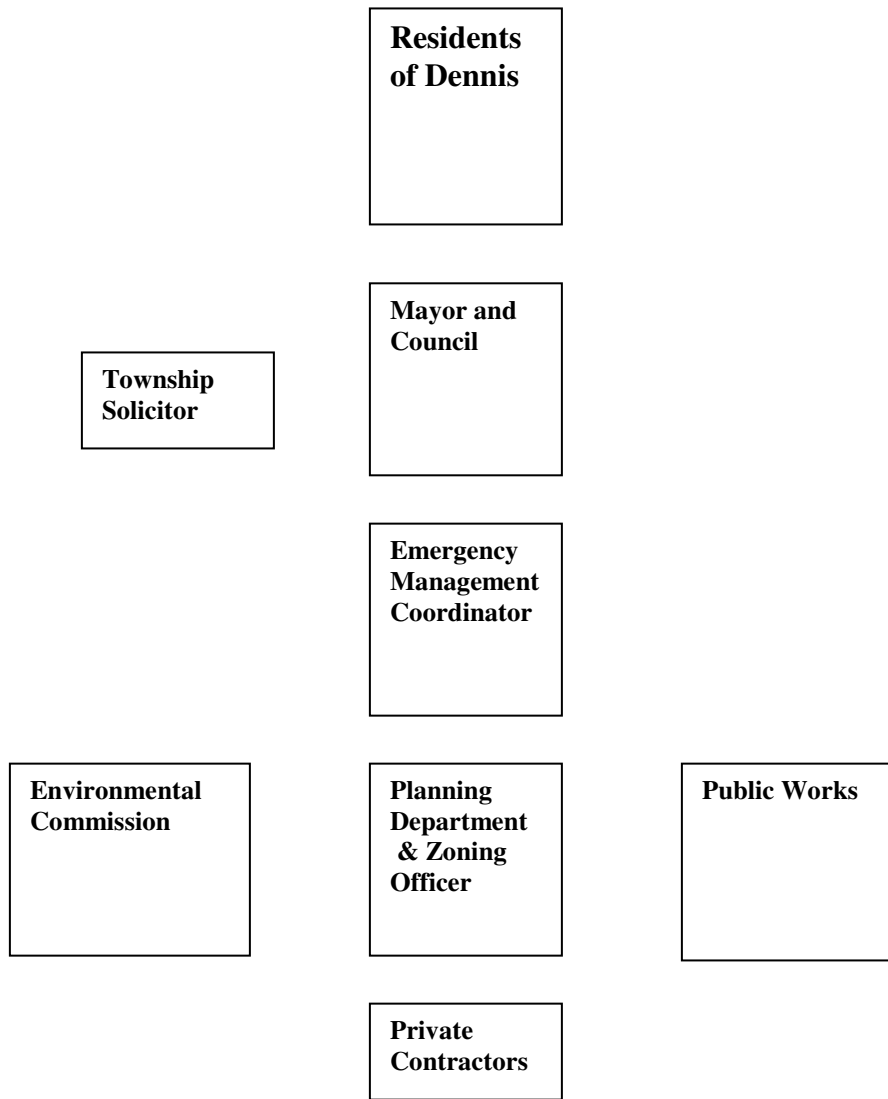
- (4) Shrubs and trees authorized by N.J.A.C. 7:50-6.25 shall be used for revegetation or landscaping purposes. Other shrubs and trees may be used in the following circumstances:

§ 185-47. Forestry. [Amended 2-24-97 by Ord. No. 97-01]

A. Permit required. No forestry in the Pinelands Area of the township shall be carried out by any person unless a permit for such activity has been issued by the Township Zoning Officer. Notwithstanding this requirement, no such permits shall be required for the following forestry activities:

- (2) **Tree** harvesting provided that no more than one (1) cord of wood per five (5) acres of land is harvested in any one (1) year and that no more than five (5) cords of wood are harvested from the entire parcel in any one (1) year;
- (3) **Tree** planting, provided that the area to be planted does not exceed five (5) acres in any one (1) year, no soil disturbance occurs other than that caused by the planting activity and no trees other than those authorized by N.J.A.C. 7:50-6.25 are to be planted;

Organizational Chart



Responding to tree service requests

The Public works Department is responsible for all tree maintenance and removal. Tree service requests are received from residents, the mayor or council, or members of the Environmental Commission. All requests are received or put into written form. All requests are reviewed by the Public Works Director. Each request is evaluated according to individual need and the overall objectives for that location.

Potentially hazardous trees have the highest priority and are addressed immediately. Pruning requests are combined with scheduled pruning plans whenever possible. Tree removals are usually planned individually.

Contracting Tree Service Companies

The Public works Department performs most of the township tree maintenance and removal. Outside contractors are not used very often.

A large pruning project may be performed by contracted private tree service companies. Most of these projects are planned well in advance so as to allow time to receive bids from at least 3 local tree service companies. An Emergency

Management Plan may include receiving bids from local companies for emergency tree care at a pre-established cost per hour or day.

5. COMMUNITY MAP (Attached)

The Dennis Township Tree Register from the 1994 Master Plan (plate #19) has been included for the Community Map

6. TRAINING PLAN AND PROFESSIONAL DEVELOPMENT

The Township of Dennis is committed to maintaining a high standard of quality in both the development and the maintenance of the urban forest in the Township. This standard can only be achieved through ongoing training and professional development of all individuals that are part of overseeing the community forest. These programs will:

- Ensure that members of the Environmental Commission and municipal personnel have the training necessary and the information available to properly manage the community forest.
- Create a continually increasing pool of members within the community that are trained or experienced in the field of arboriculture.
- Ensure that tree evaluations, tree planting, and tree maintenance are performed to consistent standards.
- Fulfill the requirements of the New Jersey Environmental and Community Forestry Assistance Act that reduces or eliminates the liability of the Environmental Commission and the Township under the Tort Claims Act.
- Ensure that the community forest in the Township of Dennis continues to be a cherished and valuable asset to the community
- Encourage participation in local Master Gardener and Environmental Stewardship programs offered through Rutgers Cooperative, and training offered locally by other agencies such as ANJEC or the Nature Conservancy

Current Training Needs

The Environmental Commission has identified the following areas where ongoing training is necessary:

- Core Training for members of the Environmental Commission and municipal personnel.
- Tree Hazard Identification for members of the Environmental Commission, municipal personnel, and volunteers.
- Basic Arboriculture, tree identification, and proper pruning techniques for members of the Environmental Commission and municipal personnel.
- Community based teaching seminars open to all residents of the Township of Dennis.
- Encourage participation in local Master Gardener and Environmental Stewardship programs offered through Rutgers Cooperative, and training offered locally by other agencies such as ANJEC or the Nature Conservancy

Existing Programs, Policies & Procedures

The Public Works Director and several members of the Environmental Commission are currently Core Trained.

- The Environmental Commission sends new Environmental Commission members to Core Training sessions each year.
- The Public Works Director may send at least one municipal employee to training sessions each year.
- The Environmental Commission educates the community through presentations at the Arbor Day activities and educational seminars

2009 – 2014 Objectives

1. Core Training Program (Annual training 2009 – 2014)
Send new members of the Environmental Commission and at least one municipal employee to a Core Training seminar that will satisfy the requirements for the New Jersey Environmental and Community Forestry Assistance Act Core Training.

2. Ongoing Training (Annual training 2011 – 2014)
Send at least two members of the Environmental Commission or the municipal government to training opportunities that satisfy the Continuing Education requirements of the New Jersey Environmental and Community Forestry Act.
3. Tree Hazard Identification (Annual training 2011 – 2014)
Provide training seminars for members of the Environmental Commission, municipal personnel, and volunteers to be able to identify hazardous tree characteristics and to rate them according to an accepted hazardous tree rating system.
4. Young Tree Pruning Methods (Annual training 2012 – 2014)
Provide training seminars for members of the Environmental Commission, municipal personnel and volunteers on methods of pruning young trees.
5. Specialized and Advanced Training (Continuous 2013 – 2014 as funding sources become available)
In addition to the training listed above, at least one member of the Environmental Commission or a municipal employee should receive specialized training in at least one of the following categories:
Basic Arboriculture, tree identification, and proper pruning techniques, outreach training, volunteer recruitment, budgeting, legal responsibilities, planting, urban soils, tree care disaster planning, sidewalk/tree conflicts, recreational use of woodlands, writing specifications for bidding proposals, tree selection, soil amendments, root barriers.

Training Sources

The Environmental commission will continue to utilize a variety of training and information sources including:

- The New Jersey Forestry Council’s Training & Accreditation Program.
- Local & Regional Environmental Meetings & Seminars (New Jersey Environmental Federation, New Jersey Chapter of the International Society of Arboriculture, Rutgers Cooperative Extension Service, Rutgers University Office of Continuing Professional Education, Committee for the Advancement of Arboriculture, etc.)
- In-House Training Sessions & Workshops.
- Trade Publications and Educational Materials (materials distributed by the above groups will continue to be received and distributed)

Outside Contractors & Public Utilities

Outside individuals must have sufficient training and knowledge to properly perform any work done on or around Dennis’s public trees. All work will conform to ANSI A-300 Pruning Standards and performed in a manner consistent with ANSI Z-133 Safety Standards.

7. PUBLIC AWARENESS, EDUCATION AND OUTREACH

Community awareness and education is a high priority for the Environmental Commission and is listed as one of the primary objectives in our management plan. The Environmental Commission recognizes the need to promote and develop more programs that stimulate public interest, appreciation, and support for public trees and proper maintenance of private trees.

Existing Programs, Policies & Procedures

- Arbor Day: Arbor Day is celebrated in the Township of West of Dennis at the elementary school. Activities this year included a tree planting programs and a presentation to the 4th Grade by a certified arborist.
- Press Releases: Press releases relating to current events and tree-related concerns are distributed to local newspapers when appropriate, typically for Arbor Day.

2009 – 2014 Goals

The Environmental Commission will be develop, implement and support Public Education and Awareness programs that address the community need or interest. Some of the projected projects will:

1. Stimulate public interest and community participation in identifying and preserving landmark and specimen trees
2. Develop a portable display featuring landmark trees of Dennis Township Tree Registry and forms to submit potential trees for inclusion. Locate, assess, measure and photograph trees.
3. Develop handouts and articles about the Environmental Commission, community benefits of trees, tree care, planting, infestation control, landmark tree registry and preservation.
4. Stimulate public interest, appreciation and support for public trees and the proper maintenance of private trees.
5. Consider the benefits of establishing a Shade Tree Committee to take the lead in Forestry Management Plan activities
6. Provide educational seminars on tree selection, planting, pruning, and maintaining trees
7. Support Arbor Day presentation to 4th grade on benefits of trees in our community, tree planting demonstration, distribution of seedlings

2009 – 2014 Objectives

Presentations

School Presentations (April 2011- Continuous)

The Environmental Commission will sponsor an Arbor Day event at the elementary school.

An educational program will be implemented at the elementary school that relates to understanding trees

Arbor Day Presentation (April 2012- Continuous)

An educational program and tree planting demonstration will be performed . Local newspapers will be contacted in March and supplied with information on plans for Arbor Day activities at the park and the elementary school

An educational program, tree proclamation, and tree planting demonstration will be performed.

Booths at Fairs (March 2013- Continuous)

A booth display will be sponsored by the Environmental Commission for community events that will provide information and resources on the following topics: The importance of maintenance pruning on street trees on private property, preserving landmark trees, the importance of enhancing and sustaining Dennis's community forest, and the importance of protecting the urban forest as the Township of Dennis expands with new development projects.

Educational Seminar (March 2012- Continuous)

A seminar will be performed on selected arboricultural topics.

DTEC Demonstration Garden (January 2011 – Continuous)

Indigenous plants and trees will be planted, labeled and described in the DTEC Demonstration Garden.

Significant Tree Preservation (January 2012 – Continuous)

The Environmental Commission will make a presentation on Preserving Landmark Trees to the Dennis Twp Historic Homeowners Association and interested residents.

Community Based Training Programs

These training programs are developed for municipal employees and Environmental Commission members and are also open to Dennis residents

Tree Planting Demonstration (annual training 2012 – Continuous)

A proper tree planting demonstration at the DTEC Demonstration Garden will be sponsored by the Environmental Commission and include municipal employees.

Young Tree Pruning Methods (annual training 2012 – Continuous)

A training seminar will be provided for members of the Environmental Commission, municipal personnel and Dennis residents on methods of pruning young trees.

Specialized and Advanced Training (2013 – Continuous, as funding sources become available)

A special educational seminar will be provided to the residents on tree-related topics such as: Basic Arboriculture, tree identification, proper pruning techniques, tree planting, soil amendments for urban soils, sidewalk/tree conflicts and root barriers, recreational use of woodlands.

Community Based Planting Programs (This section is also included in the Tree Planting portion of this plan)

Tree-planting projects (March 2012- Continuous)

The Environmental Commission will implement planting projects throughout Dennis Township that are well publicized and enhance community support for trees.

The Environmental Commission will implement a 3-year watering plan for trees planted by the Environmental Commission that includes a budget

“Free-Tree-for-Township-Residents” project (April 2014- Continuous)

The Environmental Commission will distribute tree seedlings to residents at township events such as the Dennis TWP. Night Out.

The Environmental Commission will sponsor a “Free-Tree-for-Township-Residents” event as a community event that includes an information table and a tree planting presentation.

Developing Information and Resources

Significant Tree Preservation (January 2012 – Continuous)

The Environmental Commission will develop a list and map of the landmark trees of Dennis Township in a Tree Registry that includes a formal certificate of registry.

The Environmental Commission will stimulate public interest and community participation in identifying and preserving landmark and specimen trees.

The Environmental Commission will develop a portable display featuring landmark trees of Dennis Township Tree Registry and forms to submit potential trees for inclusion. Locate, assess, measure and photograph trees.

Literature Distribution (January 2011 – Continuous)

The Environmental Commission will provide information to residents and community organizations that include the following topics: Proper maintenance and care of trees, proper watering and care of young trees, tree planting, maintenance, pruning, and tree hazard awareness.

The Environmental Commission will develop handouts and articles about the Environmental Commission, community benefits of trees, tree care, planting, infestation control, and landmark tree preservation.

Optimum Tree Species List (January 2011 - Continuous)

The Environmental Commission will develop a list of the optimum tree species for the community that is based on the existing soils, actual wind and water conditions, salt tolerance, planting constraints, aesthetic qualities, hardiness, and insect & disease resistance and the tree’s beneficial qualities in relation to the migratory bird population

Tree Care & Landscape Advice (January 2012 – Continuous)

The Commission will be available to Township residents and bona-fide agencies for advice on tree maintenance, preservation and landscape design. This service will be provided at no charge when personnel are available.

The Dennis Environmental Commission Brochure (January 2014 – Continuous)

The Commission will develop a brochure about the importance of trees, the purpose of the Environmental Commission, and existing tree ordinances in Dennis.

Web Site (December 2012)

Develop an Environmental Commission website with an interactive format for identifying notable trees and reporting tree hazards, links to arbor resources and agencies and information on selecting planting, pruning, protecting and maintaining trees.

Press Releases (January 2012 – Continuous)

Develop press releases relating to current events, indigenous trees, pruning, planting, and tree-related concerns to be submitted to The Herald and other local newspapers.

Develop a Photo CD (January 2014)

The Environmental Commission will develop a Photo CD Rom of Dennis Township's environmental highlights emphasizing our forests and ecology and resulting outdoor recreational opportunities for distribution at Township events

Tree City USA: (April 2012- Continuous)

The Township of Dennis will apply for the Tree Township USA designation

8. STATEMENT OF THE TREE BUDGET

A goal of this management plan is to maintain a balance between long term development of the community forest and budgetary limitations, while avoiding any compromises in public safety.

Funding Sources

Municipal: The Environmental Commission has a yearly budget allotment from the Township of \$_____ per year.

The Environmental Commission also receives support through services in kind for the needs of the commission administrative needs, equipment and materials for tree planting projects, and non-contracted or emergency pruning and removal. Tree planting, maintenance, and removal projects are funded on an individual basis.

Private and Corporate Donations: Monetary donations are rarely received from private and corporate sources in the community. Volunteer time, landscaping materials, and labor are contributed privately and corporately from residents and businesses in the community.

Grants: No grant money is received at the present time. A grant for this management plan has been approved and is pending final approval of the plan.

Budget for the Year 2009		
	<u>Cash</u>	<u>Service in Kind</u>
Income		
Municipal Contribution	\$	\$
Private / Commercial Contributions	\$	\$
Municipal In-kind Services (Secretary)	\$	\$
Municipal In-kind Services (Public Works)	\$	\$
Pruning, Maintenance, & Removals	\$	\$
Leaf and Brush Collection	\$	\$
Total Revenue	\$	\$
Expenses	<u>Cash</u>	<u>Service in Kind</u>
Pruning, Maintenance, & Removals	\$	\$
Tree Planting	\$	\$
Training and Education	\$	\$
Professional Services	\$	\$
Arbor Day Activities	\$	\$
Administrative Expenses	\$	\$
Leaf and Brush Collection	\$	\$
Maintenance of Compost Facility	\$	\$
Watering	\$	\$
Total Expenses	\$	\$

9. PLAN IMPLEMENTATION

The Township of Dennis has set the following objectives in an effort to fulfill its mission for the next 5 years:

1. Maximize public safety relative to public trees.

The Township of Dennis, both collectively and as individual committees, boards, commissions and departments, shall always strive to maximize safety relative to trees as the first priority in regard to all tree related decisions.

2. Training

The Environmental Commission will provide training resources for the members in Core Training and arboricultural related issues that are related to the community need.

The Public Works Department will provide training resources for the employees in Core Training, Risk Assessment, Tree Maintenance, Tree Planting, and Insect and Disease Control.

3. Public Education and Awareness

The Environmental Commission will be develop, implement and support Public Education and Awareness programs that address the community need or interest. Some of the projected projects will:

- Stimulate public interest and community participation in identifying and preserving landmark and specimen trees. Develop a portable display featuring landmark trees of Dennis Township Tree Registry and forms to submit potential trees for inclusion. Locate, assess, measure and photograph trees.
- Consider the benefits of establishing a Shade Tree Committee to take the lead in Forestry Management Plan activities
- Develop and maintain the new web site
- Develop handouts and articles about the Environmental Commission, community benefits of trees, tree care, planting, infestation control, landmark tree registry and preservation.
- Stimulate public interest, appreciation and support for public trees and the proper maintenance of private trees.
- Provide educational seminars on tree selection, planting, pruning, and maintaining trees

4. Arbor Day Activities

The Environmental Commission will be develop, implement and support Arbor Day activities as outlined in the Arbor Day and Tree city USA guidelines. These programs will include:

- School Presentations – An Arbor Day presentation at the elementary school on the benefits of trees in our community, tree planting demonstration, tree proclamation, and the distribution of seedlings
- Support Arbor Day in accordance with the Tree City USA standards

5. Assessment/Inventory

The Environmental Commission will develop a tree inventory of ‘Noteworthy Trees’ to be added to the ‘Tree Register’.

The Public Works Department will implement a tree inventory system that identifies the following tree information:

- The tree inventory of Young Trees.
- The tree inventory of trees that require Tree Maintenance.
- The tree inventory High Risk Trees.
- The tree inventory of Open Planting Sites

6. Tree Hazard Identification Plan

The Public Works Department will develop a Tree Hazard Identification and Risk Management Plan that will include:

- A Risk Assessment for significant trees in the township.
- A Risk Assessment for trees on public property or trees that may impact public property.
- A schedule of tree examination by zones and prioritized action based on safety.

7. Tree Planting

The Public Works Department may be responsible for the planting or planting oversight of new trees on municipal property. The Environmental Commission will assist the Planning Department by providing project development, training resources, and stimulating community support.

- The Environmental Commission will develop a set of guidelines for planting trees and a list of optimum recommended tree species that is reflective of the current tree inventory and the community needs
- The Environmental Commission will develop a set of optimum tree species for the community that is based on the existing soils, actual wind and water conditions, salt tolerance, planting size, physical constraints, aesthetic qualities, hardiness, insect & disease resistance, and the tree’s beneficial qualities in relation to the migratory bird population

- The Environmental Commission will develop a proactive tree-planting program. Tree planting will be increased in year 4-5 of this plan.

8. Tree Maintenance

The Public Works Department will be responsible for the maintenance and protection of all trees on public property throughout the Township.

- The Public Works Department will be responsible for the maintenance of the existing mature trees on public property throughout the Township through proper maintenance.
- The Public Works Department will be responsible for the maintenance and protection of the young trees on public property throughout the Township through proper young tree pruning.
- The Environmental Commission will assist the Public Works Department in the development and implementation of a long-term and short-term maintenance plan for areas that have been designated the responsibility of the Township.
- The Environmental Commission will compose a letter for distribution to utility services, state agencies, and municipal departments. The letter will request that the Environmental Commission should be notified in of any activity affecting trees and the commission's willingness to participate in project planning.

9. Tree Recycling

The Public Works Department will be responsible for the recycling program for recycling leaves

- The Township of Dennis has a leaf recycling program for recycling leaves. Residents can receive one pick-up in the spring and one pick-up in the fall.
- The Township also has a tree recycling program for recycling trees that are left by the curb. Residents can receive one pick-up in the spring and one pick-up in the fall.
- All material is recycled back into the environment.
- No expansions or changes are planned at this time.

10. Ordinance Establishment

The Dennis Township Council will determine the need for any supplemental ordinances needed for the oversight of planting, maintenance, and removal of trees. The Dennis Township Council may request assistance from the Environmental Commission or other respective municipal entities. The Environmental Commission or other respective municipal entities may also make recommendations based on community comment or a determined need. Some of the possible recommendations may be:

- an ordinance for tree protection on new construction sites
- an ordinance to encourage builders to mitigate tree removal
- an ordinance for protection of specimen trees in the Dennis Township Landmark Tree Registry
- an ordinance for tree removal mitigation fund for major subdivisions
- an ordinance for tree planting specifications in Town Center design code

11. Tree Care Disaster Plan

The Environmental Commission will consult with Public Works and Emergency Management to assist the Emergency Management administrator in the development an Emergency Management Plan.

12. Insect and Disease Management

The Environmental Commission will assist the Public Works Department in the development of a development of a set of guidelines for addressing insect and tree disease problems such as Gypsy Moth, Southern Pine Beetle, and Bacterial leaf Scorch

10. TREE INVENTORY PLAN

Goals

A Tree Inventory Plan will be developed to be implemented on an ongoing basis. The goal is to have an information and data resource that is accurate, but can also be updated and maintained in an efficient manor. A review of the actual need for the specific information maintained in the inventory that is compared to the cost and difficulty of maintaining each of those attributes should determine which of the following needs the inventory process will fulfill.

The iTree software and inventory method will be implemented by the Public Works Department on a trial basis. A new version of the software will be available in the Spring of 2009. The software will need to be examined before a final decision is made.

Information and data that is gathered will be maintained in a data base to accomplish the following goals:

The Environmental Commission will develop a tree inventory of 'Noteworthy Trees'.

The Public Works Department will implement a tree inventory system that identifies the following tree information:

- The tree inventory of Young Trees.
- The tree inventory of trees that require Tree Maintenance.
- The tree inventory High Risk Trees.
- The tree inventory of Open Planting Sites

Additional information related to the community forest that may be necessary for tree selection or determining maintenance cycles will be determined through a sample survey of the trees at that time.

Proper management of the urban forest requires a thorough working knowledge of the tree population which includes species diversity, age class diversity, planting potential, overall condition and specific environmental limitations, and the current risk potential associated with large trees in a populated community

The population of street trees and trees that are directly under the responsibility of the Public Works Department is a small fraction of the actual tree population within the community. It is important to maintain a database of the large trees with defects, areas of high risk of tree failure, open planting areas, and trees that need watering and pruning. However, to effectively understand the condition of the urban forest in Dennis Township and provide a service to the community it is important to focus on understanding the entire tree population within the Township and the surrounding communities. Bi-annual community tree surveys can be more beneficial than annual street tree inventories.

For example, in addition to inventorying populations and conditions of street trees and trees on other Environmental Commission sites, it is important to assess and inventory trees on private properties. These trees may be declining, over-mature, diseased or insect-infected, important to migratory birds, or their condition may otherwise be Noteworthy to the community. Also, when groups of trees are removed, whether a small number during road improvements, or the loss of several acres of woodland such as in new construction projects, this data is a valuable part of a complete tree inventory regardless of whether it occurs on private or public lands.

Objectives

The Public works Department and the Environmental Commission will gather information on open planting areas that include the address, location, planting area width, overhead wires, planting restrictions, and tree recommendations. (September 2011- Continuous)

The Environmental Commission will gather information on the location of Noteworthy trees from previous planting records. These trees may need to be re-assessed for pruning. (March 2010- Continuous)

The Public works Department will gather information on trees that have been pruned to reduce potential hazards and streets that have a population of trees larger than 16 inches in diameter. These trees may be used for the initial assessment of the tree maintenance and Hazard assessment. (September 2010- Continuous)

The Public works Department will determine the actual need and most efficient method of maintaining this information. Re-evaluate what information the Public Works Department is actually going to use. (September 2010-Continuous)

11. TREE HAZARD IDENTIFICATION AND RISK MANAGEMENT

Scope

Hazard evaluation is one component of a comprehensive Risk Management Program. A Risk Management Program includes a tree assessment process of examining trees, rating their likelihood of causing damage, and taking action to abate the hazard or to reduce the risks associated with the trees. Risk Management should also include the process of avoiding potentially hazardous situations from developing by applying proper planning, planting techniques and tree maintenance.

Dennis has a low number of large or over-mature trees on public property. However, there are many large trees on private or residential properties. The Public Works Department has the primary responsibility of tree risk management for the trees that are on Township property or streets. The municipal government also has a moral responsibility to the community to improve public safety by providing information and resources to the community related to hazardous trees on private property.

Existing Programs, Policies & Procedures

The Public works Department is responsible for initially responding to issues related to hazardous trees. A determination is made as to either the tree is the responsibility of the Township or a property owner. The Code Enforcement and Zoning officer can deem a tree hazardous and notify the homeowner to remove it within 30 days. The Township has the authority to remove the tree and have a lien placed on the property for the cost of removal.

Goals

The Public works Department will be responsible for the implementation of a Tree Risk Assessment. The decision to perform a Tree Risk Assessment of the trees within the Township and the implementation of a tree risk management plan may need to be approved by the Township Council. The Environmental Commission is recommending the following goals:

1. To maximize public safety relative to public trees.
2. To improve public safety by detecting, evaluating, and correcting or removing hazardous trees
3. To improve public safety through proper management of the tree resource by avoiding the creation of potential hazards caused by improper planning, planting, and maintenance of trees
4. To actively demonstrate that the Environmental Commission and the Township have been responsible in the management responsibility of improving the safety of people and property

Method Used For Hazard Evaluation

Hazard Evaluations will be based primarily on the method outlined in “Urban Tree Risk Management: A Community Guide to Program, Design and Implementation, USDA Forest Service, Northeastern Area, (NA-TP-03-03)”. The Environmental Commission has a copy of this resource available.

The Guide is designed to assist managers in evaluating trees for their potential to be hazardous, provides a systematic approach to rating hazards

“Tree risk management involves the process of inspecting and assessing trees for their potential to injure people or damage property. Traditionally the term “hazard” (or hazardous) has been used in the context of evaluating trees for their failure potential. To many people, “hazard” suggests trees at immediate risk for failure. In this guide, “hazard” trees are

defined as trees with structural defects that may cause the tree or tree part to fail, where such a failure may cause property damage or personal injury. Trees will vary, ranging from low- to high-risk for failure and may require attention immediately or in the near future. The threshold of risk acceptable to liable parties is dependent upon their policies and objectives. Trees that surpass the level of acceptable risk are hazards from a programmatic viewpoint. An understanding of tree and forest biology is also an integral component of any tree risk management program. The perception of safety or acceptable levels of risk is equally or sometimes more powerful than the reality of the condition of a tree and the situation that it is growing in. Community leaders, employees, and residents that do not have forestry backgrounds often make forestry decisions that are based on local politics, emotions, and perceptions of safety. In order to make objective, science-based decisions on the safety of trees and the urban forest, individual trees and site conditions need to be evaluated for the level of risk that they do or do not present. (Urban Tree Risk Management, Chapter 2, page 7)

Tree Risk Management Program Planning and Design: A Ten Step Approach

- Step 1. Assess the tree resource
- Step 2. Review current tree management practices
- Step 3. Assess fiscal and human resources available to manage the tree resource
- Step 4. Identify program goals
- Step 5. Formulate a tree risk management strategy
- Step 6. Prioritize inspection and corrective action needs
- Step 7. Select a tree risk rating system
- Step 8. Write a comprehensive tree risk management program policy
- Step 9. Implement a tree risk management strategy
- Step 10. Evaluate and revise

Objectives

Tree Hazard Evaluation Method January 2010 – June 2011

A Tree Risk Assessment will be performed. A selection of the risk management method needs to be determined. Several assessment methods are available for implementation by municipalities or the assessment can be performed by an outside contractor. The final decision will need to be approved by the Township Council.

Removal of Hazardous Trees

The Public Works Department is responsible for the removal of trees on Township managed property. Tree service companies may be used to perform services that exceed the resources of the department.

The approximate timeline for hazardous tree removal has been included in the following Tree Maintenance section of this document.

Objectives 2010 - 2014

- 1. Tree Hazard Evaluation (April 2010)
 - A Tree Risk Assessment will be performed that is based primarily on the method outlined in “Urban Tree Risk Management: A Community Guide to Program, Design and Implementation, USDA Forest Service, Northeastern Area, (NA-TP-03-03)”
 - a) A workgroup will be formed by the Public Works Department to perform the risk assessment.
 - b) A training session will be held to educate the workgroup and any interested members of the Environmental Commission, municipal employees or interested members of the community on the methods of risk assessment and hazardous tree classification that can be used.
 - c) The workgroup will select the method of assessment to be used and the method of recording the information according to the USDA Guide to Urban Tree Risk Management (NA-TP-03-03).
 - d) The workgroup will develop a list of specifications for the assessment.
 - e) The workgroup will perform the Risk Assessment with assistance from a qualified arborist or CTE if necessary.

- f) A complete report of the risk assessment will be submitted to the Public Works Department for approval and implementation.
 - g) The Public Works Department will determine the need and timeline for additional assessments based on the report from the initial risk assessment.
2. Removal of Hazardous Trees and Pruning for Hazard Reduction (June 2010-December 2010)
 - Trees that present a severe hazard or trees that have been identified for immediate removal in the risk assessment will be addressed and contracted separately.
 - Trees that require removal or pruning for hazard reduction will be grouped according to recommendations by the workgroup and contracted to a tree service company.
 3. Development of a Risk Management Plan (January 2012 – 2014)
 - In January of each year all of the Hazardous Tree Complaints from the previous year will be reviewed. Trends in tree decline, species with high hazard development, and areas within the Township that have high rates of hazard development will be evaluated according to the USDA Guide to Urban Tree Risk Management (NA-TP-03-03). Decisions on long-term methods of hazard reduction will be addressed. Methods of maintaining a mature tree canopy within the Township while maintaining age and species diversity will be reviewed. Preliminary planting, pruning, and removal forecasts will be made, based on the information available.

12. TREE MAINTENANCE

The goals of a good tree maintenance program are to maximize public safety relative to public trees, to maintain a healthy tree canopy, and to maintain a balance between long term development of the community forest and budgetary limitations.

Goals

- Implement a Tree Hazard Identification and Risk Management Plan that reduces liability by managing hazardous trees.
- Maintain and protect the existing mature and young trees throughout the Township through proper maintenance.
- Develop and implement a long-term and short-term maintenance plan for areas that have been assigned to be the responsibility of the Environmental Commission.
- Maintain the health and vitality of the community forest, including both old and young trees.
- Maintain the appearance of the community forest.
- Perform maintenance pruning on mature trees that are on Township-owned property and encourage maintenance pruning on mature street trees that are not on Township-owned property.
- Implement a pruning program for all young trees that includes training for municipal employees.
- Review new methods for maintaining mature trees such as modified sidewalk material, soil modification, and tree growth regulators.
- Implement a 3-year watering plan for new tree plantings that includes a budget.

Objectives 2010 – 2014

- 1 Hazard Reduction (April 2010 – December 2010)
 - Evaluate all tree hazards that are reported to the Public Works Department.

Schedule the pruning or removal on a priority basis that will eliminate any potential safety risks as quickly as possible.

Trees that present a severe hazard or trees that have been identified for immediate removal in the risk assessment will be addressed and contracted separately.

Trees that require removal or pruning for hazard reduction will be grouped according to recommendations by the workgroup and performed by Public Works Department or contracted to a tree service company.

2 Hazard Reduction (January 2010– December 2014)

Evaluate all tree hazards that are reported in the tree risk assessment.

Review any recommendations from the Risk Management review and determine the current needs for future development.

Schedule the pruning or removal on a priority basis that will eliminate any potential safety risks as quickly as possible.

3 Young Tree and Small Tree Pruning (April 2011 – December 2011)

A training session will be held to educate the workgroup and any interested members of the Environmental Commission, municipal employees and interested members of the community on the current methods of young tree and small tree pruning.

4 Pruning and Removals (June 2011 – December 2014)

Evaluate the requests for pruning that have been received in service requests.

Review the tree maintenance needs for the upcoming year, including pruning of young trees and watering.

Determine the actual amount of pruning to be done and schedule the work that will be done in house.

Request bids from at least three tree service companies for large projects that need to be contracted out.

Include specifications for the work to be performed from the ANSI A-300 Pruning Standards and require all pruning to be done within those standards. Oversee all work performed to assure that it is performed according to the pruning standards

5 Public Park Tree Care Program (September 2009 – December 2014)

The Public Works Department and the Environmental Commission will form a workgroup to develop and implement a maintenance plan for public parks and other recreational areas that have been assigned to be the responsibility of the Environmental Commission. This workgroup will develop a long-term plan for the care of trees that are significant in the park and recreational areas, which will optimize the balance between tree health, maintenance costs and budgetary constraints. This plan will be presented to the Environmental Commission or the Planning Department for further development.

- i. The plan will include maintenance pruning on trees that are on park property.
- ii. The plan will protect the park trees by making recommendations regarding the park use.
- iii. The plan will address issues related to the loss of mature trees and planting new trees within the parks.
- iv. The plan will review new methods for maintaining mature trees.

13. TREE PLANTING IMPLEMENTATION PLAN

A well-planned and properly implemented tree-planting program is vital to the development and maintenance of the community forest. Tree planting is important in maintaining a balance of the age and diversity of the tree population. Establishing this balance through selective tree planting programs is as important as filling the open planting areas to a maximum capacity.

Objectives 2009 – 2015

1 Increase the tree population with a proactive tree-planting program that matches the specific tree to the specific planting area by factoring in all of the planting parameters. (January 2013– December 2015 Continuous)

- a) Determine the number of trees that should be planted in the upcoming year, considering budget
- b) constraints, available resources, and the optimum number of young trees that should be planted in the community forest to maintain a balanced diversity in age range.

- c) Review the list of open planting spaces and select locations based on planting priority and age diversity.
- d) Select the most suitable tree for each site from the Optimum Tree Species List, matching the open space specifications with the optimum tree characteristics.
- e) specifications with the optimum tree characteristics.
- f) Determine the tree cost, planting cost, and first year maintenance cost.
- g) Prioritize all planting sites and determine the approximate planting schedule.
- h) Contact property owners to inform them of the plan. Have the property owner sign a liability waiver or release if appropriate.
- i) release if appropriate.
- j) Schedule a landscape supervisor or certified tree expert to oversee the planting.
- k) Purchase the trees.
- l) On the day of planting, provide as much visible support from members of the Environmental Commission as possible.
- m) Provide a refreshment booth with information available. Contact the media if practical
- n) Re-evaluate all plantings after 30 days and 90 days.
- o) Replace any trees that have died within the first year. Evaluate the dead trees and planting locations for any obvious reason for the tree failure.
- p) any obvious reason for the tree failure.
- q) Add the new trees to the inventory

2. Community Tree Planting Projects (January 2013 – 2014)

- a) Form a workgroup to develop a set of guidelines for community participation in tree planting projects in their community.
- b) their community.
- c) Contact other organizations and groups within the community to get a cooperative effort in planting trees in Dennis.
- d) in Dennis.
- e) Contact local businesses to get support and possible funding for planting trees in Dennis.
- f) On the day of planting, provide as much visible support from members of the Environmental Commission as possible.
- g) Provide a refreshment booth with information available. Contact the media if practical.

3 Specialized Tree Planting Projects (January 2013 – 2014)

Examine alternative methods for planting trees in difficult urban areas using composite soils and specialized drainage techniques.

14. TREE ORDINANCE ESTABLISHMENT

The urban forest in Dennis is quickly vanishing due to over-development. The Environmental Commission must address this issue. Trees are disappearing at a faster rate than the ability to replace them. The Environmental Commission will need to take a proactive approach to making recommendations to the municipal administration to protect the urban forest as the Township of Dennis expands with new development projects.

Goals

- Protect the urban forest as the Township of Dennis expands with new development projects.
- Address issues related to the loss of mature trees within the community.

- Develop recommendations for supplemental ordinances to address areas of concern, some of which are; the oversight of planting, maintenance, tree preservation during development, and removal of trees that are on Township property, the removal of hazardous trees on private property, tree planting in new developments, and tree planting in re-developed areas.

Existing Programs, Policies & Procedures

The Environmental Commission currently makes recommendations to the Township Council regarding tree related issues

Objectives January 2009 – December 2014

1. Form a committee within the Commission to develop recommendations for a supplemental ordinance.
2. Review previous projects and issues of concern that have been brought before the Environmental Commission and develop a list of practices that may need more regulation or involvement by the commission. Some of these issues may be:
 - Reviewing plans submitted to the Planning Board that involve tree planting.
 - Township projects that involve planting or removing street trees.
 - Planting of trees by development contractors.
 - Development of a uniform set of planting specifications.
3. Determine the pertinent areas of applicable regulation and gather information from all tree industry sources regarding ordinances for the issue
4. Review the sample supplemental ordinances in the core manual (Lakeland, Sayerville, text for supplemental ordinances).
5. Review concerns regarding supplemental ordinances with the Mayor and the Township Solicitor to gather information.
6. Assist in the development of parameters for an ordinance and present it to the Solicitor for a final draft with any other supplemental information.
7. Advocate for the development and revision of supplemental ordinances to address areas of concern.

Development of new ordinances could include:

- § An ordinance to implement the penalty portion of the state statute for damage to municipally owned trees that is described in New Jersey State Statute 40:64-12.
- § An ordinance to include the new ANSI A-300 (Part 5) national standards for tree preservation during development and construction
- § An ordinance to include the new ANSI A-300 (Part 6) national standards for transplanting trees into all specifications for tree planting.

15. TREE LEAF RECYCLING

Existing Programs, Policies & Procedures

- The Township of Dennis has a leaf recycling program for recycling leaves. Residents can receive one pick-up in the spring and one pick-up in the fall.
- The Township also has a tree recycling program for recycling trees that are left by the curb. Residents can receive one pick-up in the spring and one pick-up in the fall.
- All material is recycled back into the environment.

- No expansions or changes are planned at this time.

16. INSECT AND DISEASE CONTROL

Goal

Development of an Integrated Pest Management approach that focuses on proper tree selection, site enhancement, insect threshold and predation, and tree health to reduce the need for pesticide control.

Existing Programs, Policies & Procedures

Southern pine beetle and Gypsy moth have already caused a significant number of tree deaths in the township. Bacterial leaf scorch is expected to become a problem in the near future. Aerial spraying for the Gypsy moth has been effective. Chemical treatment for the Southern pine beetle or BLS has not been considered to be effective. Tree removal of dying or dead trees has been the most efficient practice.

Objectives January 2010 – December 2014

Development of an Integrated Pest Management Plan (January 2010 – 2014 – Continuous)

1. Review the information gathered in the inventory process to determine the extent of insect and disease damage. Bacterial Leaf Scorch, Southern Pine beetle, and several other weevils and beetles are already in the proximity of the Township.
2. Contact an arborist with a Pesticide Applicators License in category 3-A to review the information gathered and determine which insects and diseases are above the threshold of tolerance for the trees or will become a serious problem.
3. Consider all options of control: removal, improvement of plant vigor, reduction in environmental conditions beneficial to the insect or disease, pruning, pesticide application.
4. Pesticide applications will be performed using the most biorational and least toxic pesticide available.
5. Trees with a high susceptibility to insects or diseases will be eliminated from the list of acceptable species for planting.

17. EMERGENCY MANAGEMENT PLAN RELATED TO TREES

An Emergency Management Plan is needed to manage severe tree damage in the event of a severe storm or hurricane.

Goals

- Develop an emergency Cleanup Plan and a critical path or emergency route priority list.
- Establish locations for storing debris.
- Develop a list of emergency utility contacts.
- Develop an agreement with a tree service company for immediate response after a storm or hurricane.
- Perform an assessment of potential storm damage areas.
- Develop a contract requirement in all tree service contracts that guarantees that all tree service companies accepting contracts with the Township of Dennis will perform emergency services at a pre-arranged rate.

Objectives 2009-2014

- 1 Develop an Emergency Cleanup Plan and a Critical Path/ Emergency Route Priority List (March 2010 – April 2010)
 - Meet with the Emergency Management Coordinator and review the emergency routes and critical paths through the Township that will need to be cleared to provide utility and emergency services to the residents. Prioritize the routes.
 - Perform an assessment of the routes to determine the potential of storm damage along the routes.
 - Develop a contract requirement in all tree service contracts that guarantees that all tree service companies accepting contracts with the Township of Dennis will perform emergency services at a pre-arranged rate.

- 2 Prepare a Preliminary Plan (June 2010 – July 2014)
 - Establish locations for storing debris for an extended period of time within the Township.
 - Develop a list of emergency utility contacts.
 - Develop an agreement with a tree service company for immediate response after a storm or hurricane.
 - Review all information with the Mayor and the Parks Department director.

- 3 Prepare an updated Emergency Management Plan (March 2010 - 2014 Annually)
 - Meet with the Emergency Management coordinator to review Emergency Routes, critical paths, supervision, and all other emergency plan priorities.
 - Develop a coordinated communication system of reporting and logging storm damage calls and dispatching calls.
 - Determine the level and limit of municipal responsibility for storm damage cleanup.
 - Reevaluate all of the routes in the Township and determine the potential problems along the routes.
 - Contact utility companies and tree services to update information and communication links.
 - Review all information with the Mayor and the Parks Department director.

19. Community Stewardship Incentive Program Index

The following is a summary of how and where each of the thirteen CSIP practices is addressed in this Community Forestry Management Plan.

- CSIP # 1 Plan Preparation
This CSIP practice is addressed in the Community Overview section on pages 8-9
- CSIP # 2 Training
This CSIP practice is addressed in the Training Plan and Professional Development section on page 17-18
- CSIP # 3 Public Education and Awareness
This CSIP practice is addressed in the Public Education, Awareness & Outreach section on pages 18-20
- CSIP # 4 Arbor Day Activities
This CSIP practice is addressed in the Public Education, Awareness & Outreach section on page 18
- CSIP # 5 Assessment/ Inventory
This CSIP practice is addressed in the Tree Inventory Plan section on pages 25
- CSIP # 6 Tree Hazard Identification Plan
This CSIP practice is addressed in the Tree Hazard Assessment and Risk Management Plan section on pages 26-27
- CSIP # 7 Tree Planting
This CSIP practice is addressed in the Tree Planting Implementation Plan section on page 29-30
- CSIP # 8 Tree Maintenance
This CSIP practice is addressed in the Tree Maintenance section on pages 28-29
- CSIP # 9 Tree Recycling
This CSIP is addressed in the Tree Recycling section on page 32
- CSIP # 10 Ordinance Establishment
This CSIP practice is addressed in the Ordinance Establishment section on page 30-31
- CSIP # 11 Tree Care Disaster Plan
This CSIP practice is addressed in the Development of an Emergency Management Plan on pages 32
- CSIP # 12 Insect & Disease Management
This CSIP practice is addressed in the Insect & Disease Management section on page 32
- CSIP # 13 Other